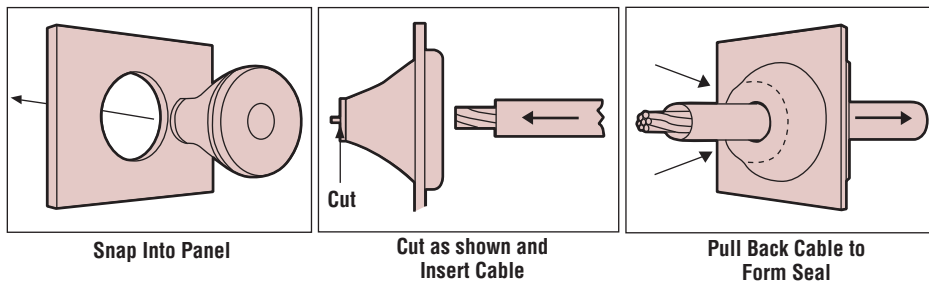




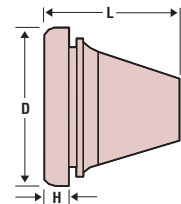
# Heyco® Snap-in PG Liquid Tight Bushings

PANEL DIMENSIONS						CABLE DIA. RANGE				PART NO.	DESCRIPTION	PART DIMENSIONS						
Hole Diameter		Thickness Range				Min.		Max.				Gray	D Head Diameter	H Head Thickness	L Overall Length		Hole Size	
in.	mm.	in.	mm.	in.	mm.	in.	mm.	in.	mm.	in.	mm.				in.	mm.		
.52	13,2	.04	1,0	.16	4,0	.12	3,0	.20	5,0	<b>4014</b>	LTB 30-50/PG7	.79	20,0	.24	6,1	.50	12,8	PG7
.63	16,0	.04	1,0	.16	4,0	.20	5,0	.28	7,0	<b>4015</b>	LTB 50-70/PG9	.79	20,0	.28	7,1	.75	19,0	PG9
.75	19,0	.04	1,0	.16	4,0	.28	7,0	.39	10,0	<b>4016</b>	LTB 70-100/PG11	.94	24,0	.28	7,1	.81	20,6	PG11
.91	23,0	.04	1,0	.16	4,0	.31	8,0	.55	14,0	<b>4017</b>	LTB 80-140/PG16	1.10	28,0	.28	7,1	.89	22,5	PG16
1.14	29,0	.04	1,0	.16	4,0	.55	14,0	.79	20,0	<b>4018</b>	LTB 140-200/PG21	1.36	34,5	.28	7,1	1.02	26,0	PG21
1.50	38,0	.04	1,0	.16	4,0	.79	20,0	1.02	26,0	<b>4019</b>	LTB 200-260/PG29	1.81	46,0	.26	6,5	1.14	29,0	PG29
1.89	48,0	.04	1,0	.16	4,0	1.02	26,0	1.38	35,0	<b>4020</b>	LTB 260-350/PG36	2.26	57,5	.31	8,0	1.42	36,0	PG36

Standard color gray.



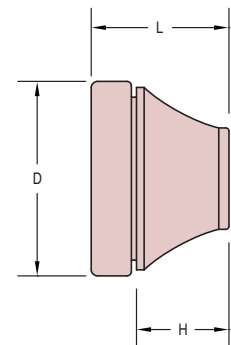
- Can be used in threaded or unthreaded holes.
- Ozone and weather resistant.
- Provides light strain relief to the cable.
- Simple to install—just snap into place, pierce thin membrane, insert & pull back cable.
- Can be used as a liquid tight plug. Offers protection to IP 67.
- Sizes available to fit cable diameters ranging from .12" (3,0 mm) up to 1.38" (35,0 mm).
- For outdoor and indoor applications.



# Heyco® Snap-In Metric Liquid Tight Bushings

PANEL DIMENSIONS						CABLE DIA. RANGE				PART NO.	DESCRIPTION	PART DIMENSIONS						
Hole Diameter		Thickness Range				Min.		Max.				Gray	D Head Diameter	H Body Thickness	L Overall Length		Hole Size	
in.	mm.	in.	mm.	in.	mm.	in.	mm.	in.	mm.	in.	mm.				in.	mm.		
.49	12,5	.02	0,5	.08	2,0	.16	4,0	.28	7,0	<b>4007</b>	LTB 30-50/M12	.79	20,0	.22	5,6	.50	12,8	M12
.65	16,5	.04	1,0	.16	4,0	.20	5,0	.35	9,0	<b>4008</b>	LTB 50-70/M16	.83	21,0	.46	11,6	.70	17,7	M16
.81	20,5	.04	1,0	.16	4,0	.32	8,0	.51	13,0	<b>4009</b>	LTB 70-100/M20	1.00	25,5	.53	13,4	.79	20,0	M20
1.00	25,5	.04	1,0	.16	4,0	.43	11,0	.67	17,0	<b>4010</b>	LTB 100-140/M25	1.20	30,5	.60	15,3	.84	21,3	M25
1.28	32,5	.04	1,0	.16	4,0	.59	15,0	.79	20,0	<b>4011</b>	LTB 140-200/M32	1.52	38,5	.73	18,6	.97	24,6	M32
1.59	40,5	.04	1,0	.16	4,0	.75	19,0	1.10	28,0	<b>4012</b>	LTB 200-260/M40	1.91	48,5	.85	21,7	1.16	29,5	M40
1.99	50,5	.04	1,0	.16	4,0	1.06	27,0	1.38	35,0	<b>4013</b>	LTB 260-350/M50	2.38	60,5	.98	25,0	1.37	34,8	M50

Standard color gray.



<b>Material</b>	Ethylene Propylene Diene Monomer Rubber (EPDM)
<b>Temperature Rating</b>	-40°F (-40°C) to 200°F (93°C)
<b>IP Rating</b>	IP 67

Quick Specs